

# BOX STANDARD

Optical wall-mounting Boxes are typically used inside customer premises as demarcation point between OSP and Building access networks. They can also be used outdoor above ground level applications or into street cabinets.

All Optotec Standard boxes are environmentally sealed for the fibre management system provide and splicing 'n' patching as well as components integration. The products are designed to allow the routing of the fibres with a minimum bend radius of 30mm throughout the whole system.

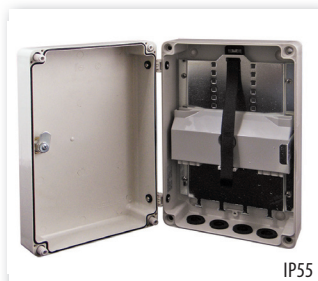
The FOCUS splicing modules offer access to selective fibres for maintenance and upgrades without affecting active.



BOX 1S



BOX 1M



BOX 2S



BOX 2M



BOX 3S



BOX 3M

BOX TYPE	PARAMETERS						
	SPlice CAPACITY					MAX PORT ENTRIES (IN+OUT)	DIMENSIONS IN MM W x H x D
	SC6	SE3	HD4	HD6	HD3- HD24		
1S	24	36	48	48	72	3	140x190x80
2S	48	72	96	96	144	4	185x275x88
3S	96	144	192	192	288	10	300x380x120



BOX WBO



BOX IP67

BOX TYPE	PARAMETERS			
	MAX FIBRES TERMINATIONS		MAX PORT ENTRIES (IN+OUT)	DIMENSIONS IN MM W x H x D
	STD	SFF		
1M	8	12	1+2	140x190x80
2M	12	24	1+3	185x275x88
3M	24	48	2+8	300x380x120
WBO	48	96	3+ 6/8	300x380x210
IP67	8	16	1+1	180x278x130

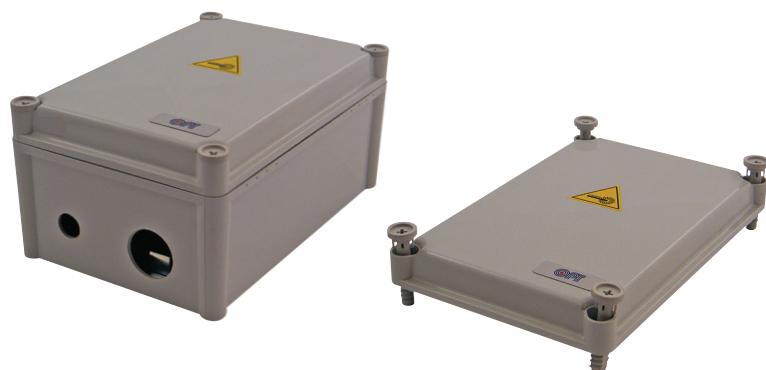
[www.optotec.com](http://www.optotec.com)

CON CX CP OSP CO FOCUS

The information given herein, including drawings illustration and schematics which are intended for illustration purposes only, is believed to be reliable. However, Optotec makes no warranties as to its accuracy or completeness and disclaims any liability in connection with its use. Optotec' obligations shall only be as set forth in Optotec' Standard Terms and Conditions of Sale for this product and in no case will Optotec be liable for any incidental, indirect or consequential damages arising out of the sale, resale, use or misuse of the product. Users of Optotec products should make their own evaluation to determine the suitability of each such product for the specific application.



# BOX IP67 Optical Wall-Mounting Boxes



## KEY FEATURES AND BENEFITS

- IP67 protection
- anti-rodent cable protection (included)
- easy re-entry and positive fibre management

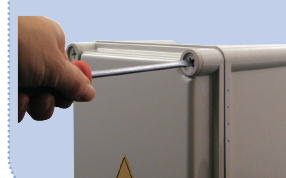
## APPLICATIONS

- Termination of cables in hazardous and severe environments
- Remote equipment (UMTS stations, sensors)

The Optotec IP67 wall termination box was developed to splice and terminate up to 8 optical fibers in particularly severe environmental conditions (railway tunnels i.e.). This compact size box ensures a high protection from dust and moisture and it is made of high quality polycarbonate to ensure high impact resistance.

[LOOK BOXES CABLE ENTRIES DATASHEET](#)

## LOCKING SYSTEM



## BOX IP67 PERFORMANCE

DIMENSIONS IN MM	PROTECTION LEVEL	MATERIAL	WEIGHT	MAX PORT ENTRIES:	MAX PORT EXIT:	DOOR OPENING:
188x278x130	IEC 60529 IP67	PVC RAL 7035	10 kg	1 for cable gland IP67 PG29(18/25)	1 for cable Ø 17 mm anti-rodent cable protection (included)	fully removable

BOX IP67		
MAX FIBRES TERMINATIONS	STANDARD	8
	SFF	16
MAX PORT ENTRIES (IN+OUT)		1+1



ELECTRIC INSULATION	✓
IMPACT RESISTANCE EN 60079	4 J
BUMP RESISTANCE EN 62262	IK 08/09
FLAMABILITY UL746 C5	UL94 5V
UV RESISTANCE UL508	✓
HALOGEN FREE ULDIN/VDE 0472 PAR.815	✓

OPTOTEC PN	REFERENCE PN	DESCRIPTION
3901441	IP67 Terminaton Box	Plastic Patch/Splice Box for 8 (12 SFF) SC connectors no tray

FOCUS     

[www.optotec.com](http://www.optotec.com)

The information given herein, including drawings illustration and schematics which are intended for illustration purposes only, is believed to be reliable. However, Optotec makes no warranties as to its accuracy or completeness and disclaims any liability in connection with its use. Optotec' obligations shall only be as set forth in Optotec' Standard Terms and Conditions of Sale for this product and in no case will Optotec be liable for any incidental, indirect or consequential damages arising out of the sale, resale, use or misuse of the product. Users of Optotec products should make their own evaluation to determine the suitability of each such product for the specific application.